



Wireless Controller for Nintendo Switch SG-N10W QUICK GUIDE v2.2

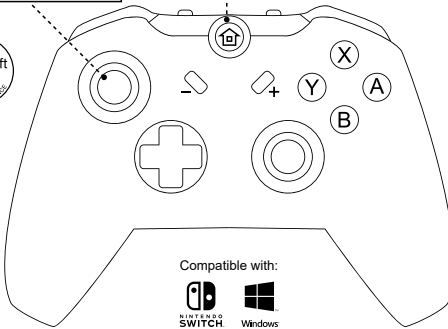
Diagram

Update Mode: (software required)
Hold down, then connect to PC.

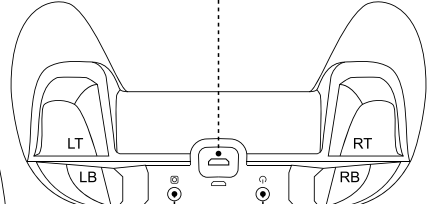
Off Status:
Hold down for sync (see Pairing & Link guides below).
During Playing:
Press to return to HOME screen;
Hold down to activate Sleep Mode option.

For Charging:
Connect to Switch dock, or wall adapter.
Wired Play on PC:
ABXY auto shift to Xbox layout.
Ⓜ Mind the USB plug side! Refer to the printing mark.

BLUETOOTH
26ft
RANGE CONTROL



Compatible with:
 SWITCH
 Windows



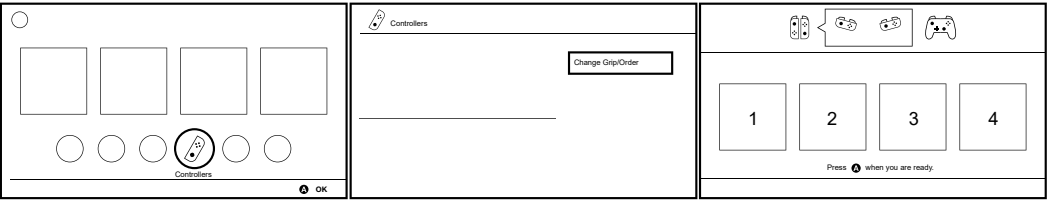
Press to capture screenshot. Capture Sleep Press to disconnect from the console, force the controller into sleep mode.

Calibrate Motion Sensor (when unlinked)

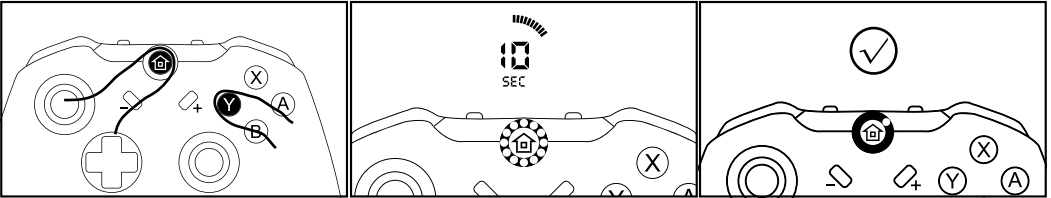
Lay the controller on level table, hold down \ominus and \textcircled{B} , then press \textcircled{C} , LED lights start blinking, press \oplus , then wait till lights off, done. Only do it on occasion you feel motion control no more precise.

Pairing

You only need to do pairing once when you have a new controller, or after a firmware update, following the steps below:



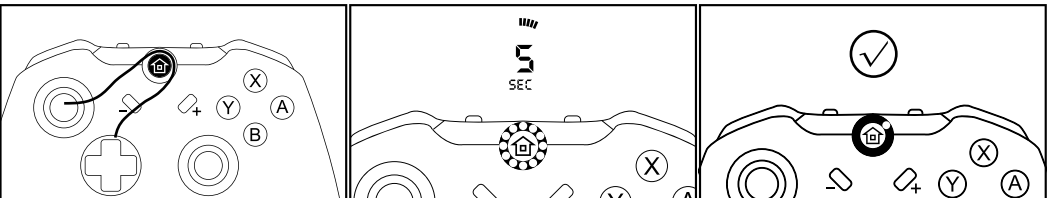
- From the HOME screen, select "Controllers", then "Change Grip/Order", the pairing screen displayed, stay here.
 Ⓜ Operate by Joy-con, touch, or a paired controller. ⚠ Ignore the instruction of last screen.



- Hold down \textcircled{H} + \textcircled{Y} .
- Release when LED light on and twinkling, then wait for around 10 seconds.
- LED stops twinkling, certain light(s) on, done!

Link

If the controller has ever been paired, just following the steps below to turn on and reconnect to the console:



- Press \textcircled{H} .
- Release when LED light on and twinkling, then wait for around 5 seconds.
- LED stops twinkling, certain light(s) on, done!